



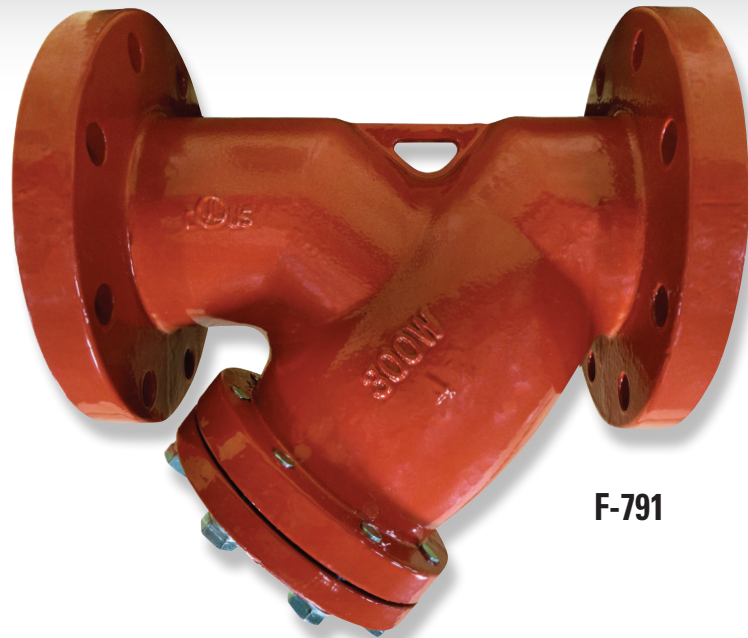
*Y-Strainers are used to prevent particulates from traveling into a fire protection system and becoming lodged in a sprinkler head, restricting flow and reducing the effectiveness of the system.*

## Y-STRAINERS

FIRE PROTECTION

### FEATURES

- 300 PSI Rating
- UL Listed
- Size Range 2" - 12"
- Flanged by Flanged or Grooved by Grooved
- Ductile Iron Body
- AWWA C550 Epoxy Coated
- Flushing Port for Line Cleaning
- Serviceable



**F-791**



**G-791**



# Iron Body Flanged Y-Strainer

Blow-off Plug • Ductile Iron Body • Flanged Ends • AWWA C550 Epoxy Coated



**300 PSI (20.7 BAR) Non-Shock Cold Water to 32°F (0°C) to 180°F (82°C)**  
**Flanged End Connections 2" through 12" Sizes for Fire Protection Water Service**

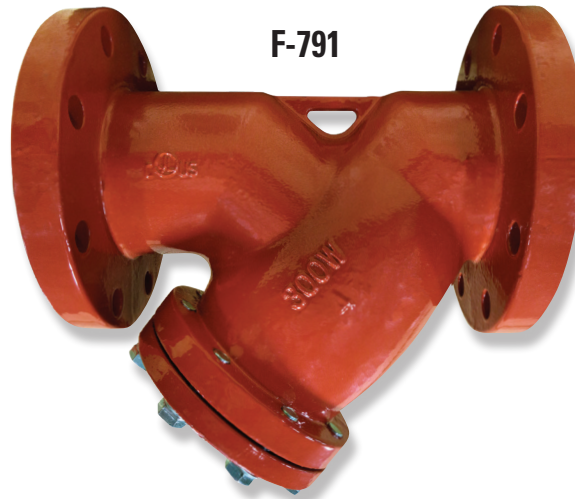
UL LISTED\*

## MATERIAL LIST

PART	SPECIFICATION
1. Body	Ductile Iron ASTM A536 65-45-12
2. Screen <sup>1</sup>	Stainless Steel ASTM A276 S30400
3. Gasket <sup>1</sup>	Graphite / Stainless Steel S30400
4. Cover	Ductile Iron ASTM A536 65-45-12
5. Washer Screw	Steel Zinc Plated
6. Screw	Steel Zinc Plated
7. Plug	Malleable Iron Galvanized

\* Compliance with UL Subject 321 Outline of Investigation for Pipeline Strainers

<sup>1</sup>Included in Repair Kit

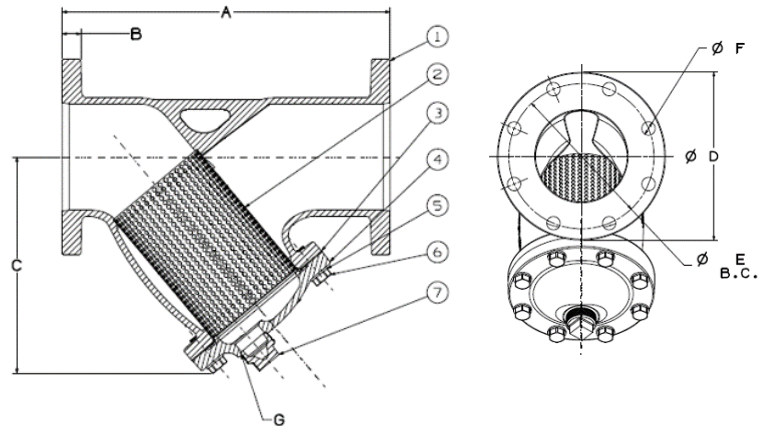


F-791

**Repair Kit Available**

**ANSI B16.42 Class 150 and PN16 Flange Options Available**

VALVE SIZE		SCREEN HOLE SIZE		FRICTION LOSS		REPAIR KIT
inch	mm	inch	mm	PSI	Cv Value	Number
2	50	5/32	4	6.7	60	NHT010DS
2½	65	5/32	4	4.2	109	NHT010ES
3	80	13/64	5	3.8	177	NHT010FS
4	100	13/64	5	2.8	307	NHT010HS
6	150	1/4	6.3	4.4	641	NHT010KS
8	200	1/4	6.3	3.9	1184	NHT010LS
10	250	1/4	6.3	3.6	1953	NHT010MS
12	300	1/4	6.3	3.0	3020	NHT010NS



## DIMENSIONS — WEIGHTS

VALVE SIZE		A		B		C		ØD		ASME FLANGES				PN16 FLANGES				G	WEIGHT			
										ØE	inch	mm	inch	mm	qty	ØE	inch				mm	inch
inch	mm	inch	mm	inch	mm	inch	mm	inch	mm	inch	mm	inch	mm	qty	inch	mm	inch	mm	qty	threads	lbs	kg
2	50	7.88	200	0.75	19.0	6.13	155	6.00	152	4.75	121	0.75	19	4	4.92	125	0.71	18	4	1/2" NPT	19	8.7
2½	65	10.00	254	0.88	22.3	6.50	165	7.00	178	5.50	140	0.75	19	4	5.71	145	0.71	18	4	3/4" NPT	27	12.2
3	80	10.13	257	0.94	23.8	7.09	180	7.50	190	6.00	153	0.75	19	4	6.30	160	0.71	18	8	3/4" NPT	31	13.9
4	100	12.13	308	0.94	23.9	9.00	229	9.00	229	7.50	191	0.75	19	8	7.09	180	0.71	18	8	1" NPT	53	23.9
6	150	18.50	470	1.00	25.4	12.25	311	11.00	279	9.50	241	0.88	22	8	9.45	240	0.87	22	8	1½" NPT	97	43.9
8	200	21.63	549	1.13	28.6	15.50	394	13.50	343	11.75	299	0.88	22	8	11.61	295	0.87	22	12	1½" NPT	166	75.5
10	250	25.75	654	1.19	30.2	19.19	487	16.00	406	14.25	362	1.00	25	12	13.98	355	1.02	26	12	2" NPT	240	109.3
12	300	29.88	759	1.25	31.8	21.50	547	19.00	483	17.00	432	1.00	25	12	16.14	410	1.02	26	12	2" NPT	381	173.2

Visit our website for the most current information.