

NIBCO[®]
AHEAD OF THE FLOW[®]

NEW

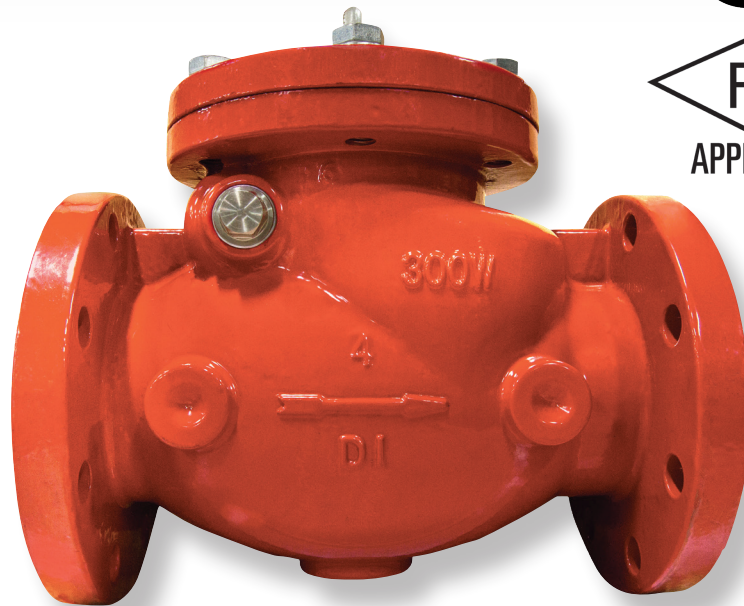
Swing check valves are automatically operated to prevent backflow of water in a system.

SWING CHECK VALVES

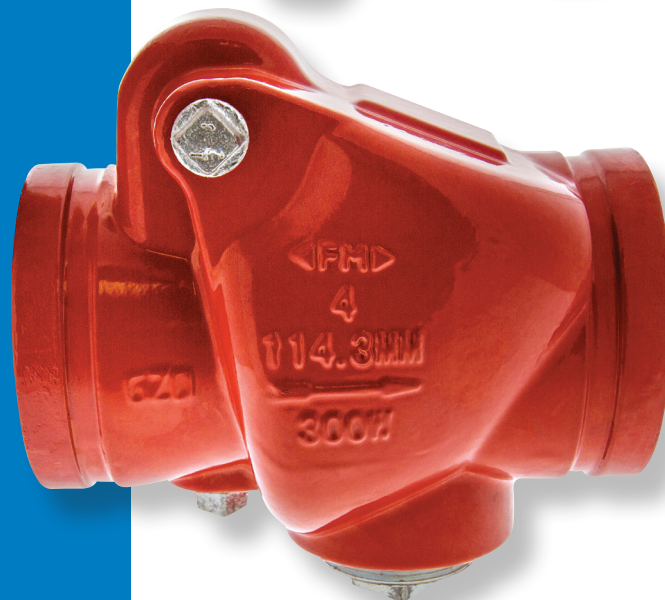
FIRE PROTECTION

FEATURES

- 300 PSI Rating
- UL Listed, FM Approved
- Size Range 2" - 12"
- Flanged by Flanged or Grooved by Grooved
- Ductile Iron Body
- Bronze Body Seat
- EPDM Seat Disc Seal
- AWWA C550 Epoxy Coated
- Bubble Tight Shut Off
- Serviceable



F-998



G-997

AHEAD OF THE FLOW[®]

NIBCO INC.
WORLD HEADQUARTERS
WEB: www.nibco.com

1516 MIDDLEBURY STREET
ELKHART, IN 46516-4740
USA

DOMESTIC CUSTOMER SERVICE
PHONE: 800.234.0227
FAX: 800.234.0557

INTERNATIONAL OFFICE
PHONE: +1/574.295.3327
FAX: +1/574.295.3455

Iron Body Flanged Check Valve

Bolted Bonnet • Horizontal Swing • Renewable Seat and Disc • AWWA C550 Epoxy Coated

300 PSI (20.7 BAR) Non-Shock Cold Water to 32°F (0°C) to 180°F (82°C)

Flanged End Connections 2" through 12" Sizes for Fire Protection Water Service

UL LISTED* • FM APPROVED**



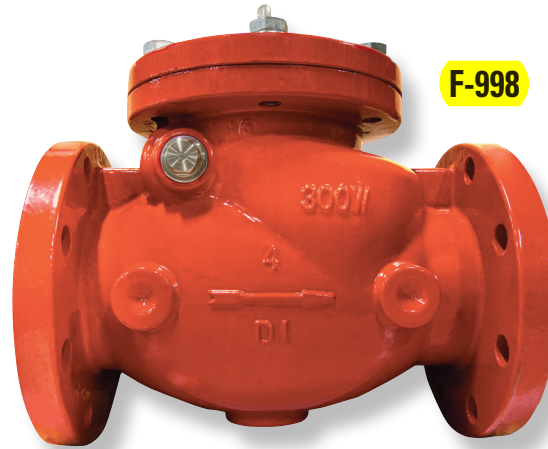
MATERIAL LIST

PART	SPECIFICATION
1. Body	Ductile Iron ASTM A536 65-45-12
2. Bonnet	Ductile Iron ASTM A536 65-45-12
3. Washer	Steel Zinc Plated
4. Screw	Steel Zinc Plated
5. O-Ring ¹	Nitrile
6. Eye Bolt	Steel Zinc Plated
7. Hanger Arm	Ductile Iron ASTM A536 65-45-12
8. Plug	Stainless Steel ASTM A276 S30400
9. Washer ¹	PTFE
10. Bushing	Brass ASTM B16 C36000
11. Hanger Pin	Stainless Steel ASTM A276 S41000
12. Seat	Bronze ASTM B62
13. Seat Disc ¹	EPDM
14. Plate	Ductile Iron ASTM A536 65-45-12
15. Plug	Bronze
16. Stud ¹	Stainless Steel ASTM A276 S30400
17. Washer ¹	Stainless Steel ASTM A276 S30400
18. Lock Washer ¹	Stainless Steel ASTM A276 S30400
19. Nut ¹	Stainless Steel ASTM A276 S30400

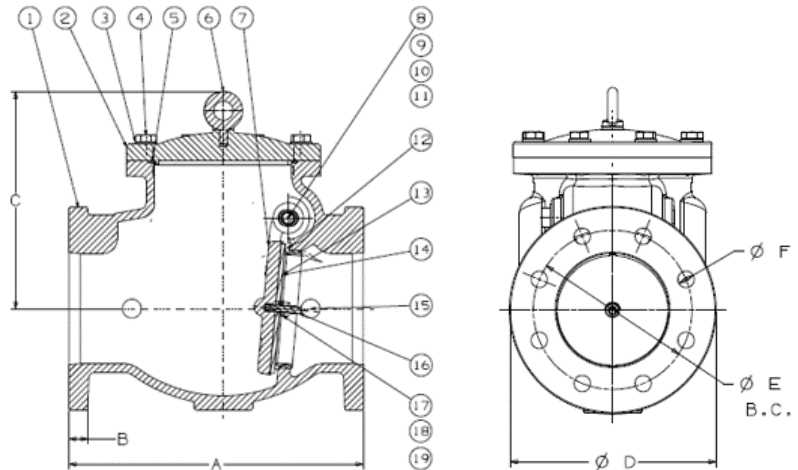
* Compliance with the Standard for Check Valves for Fire Protection Service, UL 312.

**FM Approval Class 1210

¹Included in Repair Kit



F-998



Repair Kit Available

**ANSI B16.42 Class
150 and PN16 Flange
Options Available**

DIMENSIONS — WEIGHTS

VALVE SIZE inch mm	A inch mm	B inch mm	C inch mm	ØD inch mm	ASME FLANGES				PN16 FLANGES				WEIGHT lbs kg	REPAIR KIT number
					ØE inch mm	ØF inch mm	qty	ØE inch mm	ØF inch mm	qty				
2 50	8.00 203	0.63 16	5.25 133	6.00 152	4.75 121	0.75 19	4	4.92 125	0.71 18	4	25 11.3	NLN300DS		
2½ 65	10.00 254	0.69 17.5	6.00 150	7.00 178	5.50 140	0.75 19	4	5.71 145	0.71 18	4	38 17.2	NLN300ES		
3 80	11.00 278	0.75 19	6.00 150	7.50 191	6.00 152	0.75 19	4	6.30 160	0.71 18	8	49 22.3	NLN300FS		
4 100	13.00 330	0.74 24	8.62 218	9.00 229	7.50 191	0.75 19	8	7.09 180	0.71 18	8	75 34.1	NLN300HS		
6 150	16.00 406	1.00 25.5	11.44 290	11.00 279	9.50 241	0.88 22	8	9.45 240	0.87 22	8	139 63.3	NLN300KS		
8 200	19.00 485	1.13 28.5	13.00 330	13.50 343	11.75 298	0.88 22	8	11.61 295	0.87 22	12	258 117.4	NLN300LS		
10 250	24.50 622	1.19 30.5	13.75 350	16.00 406	14.25 362	1.00 25	12	13.98 355	1.02 26	12	381 173.3	NLN300MS		
12 300	26.00 660	1.25 32	14.81 376	19.00 483	17.00 432	1.00 25	12	16.14 410	1.02 26	12	508 231.1	NLN300NS		

Visit our website for the most current information.